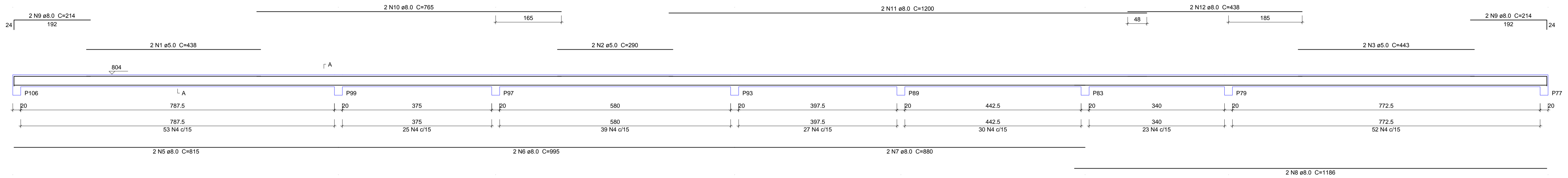
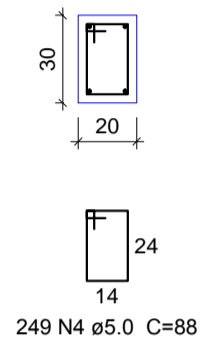


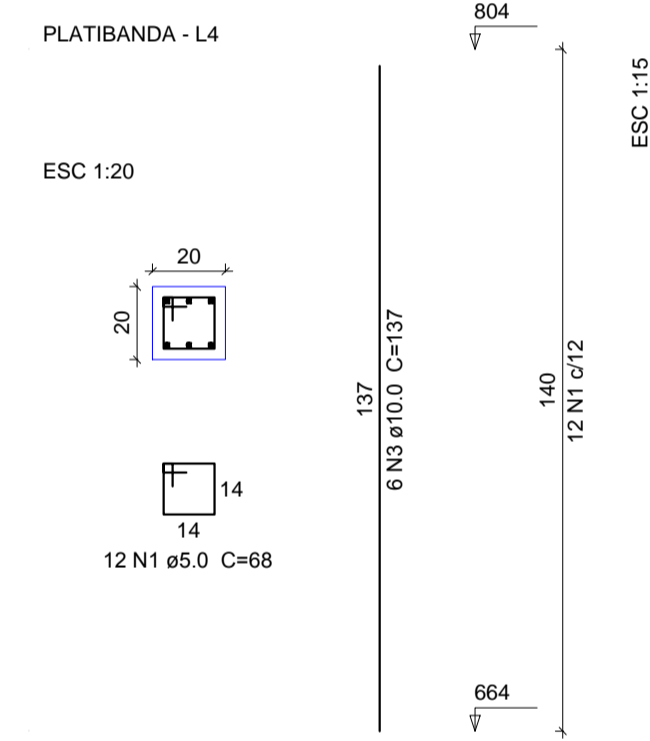
PLATIBANDA
V16
ESC 1:50



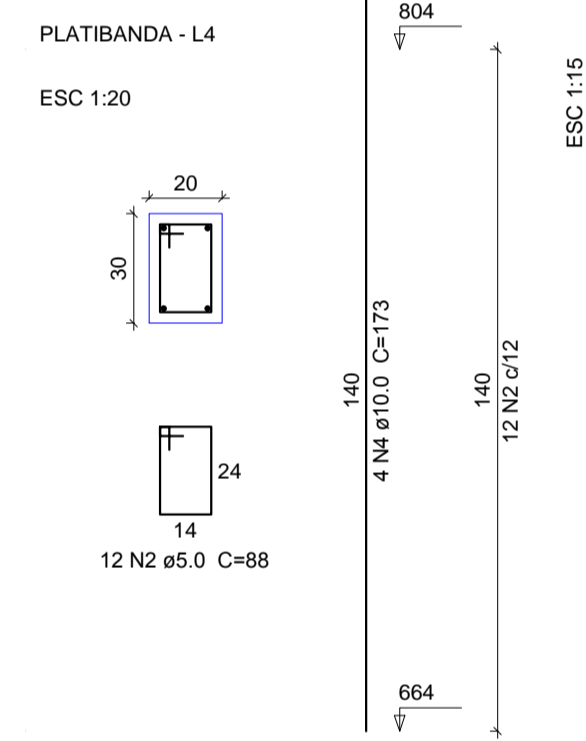
SEÇÃO A-A
ESC 1:25



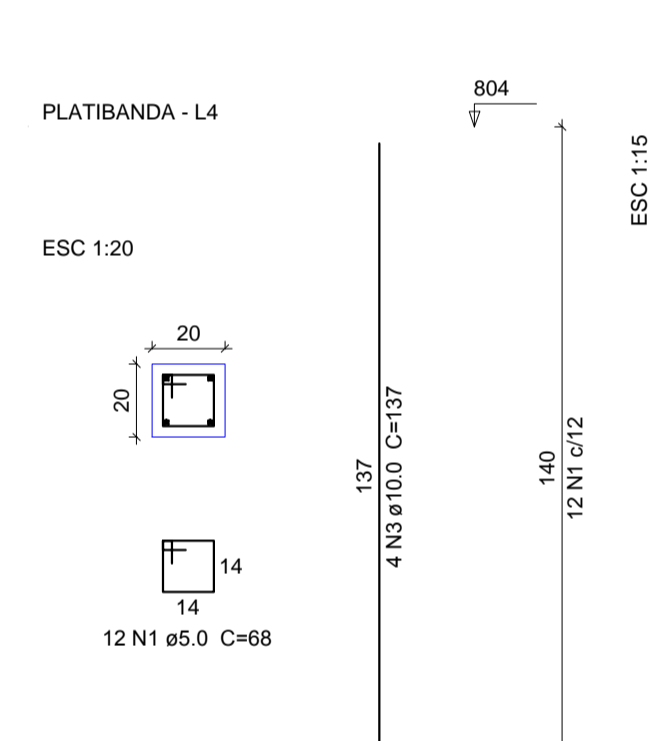
P106



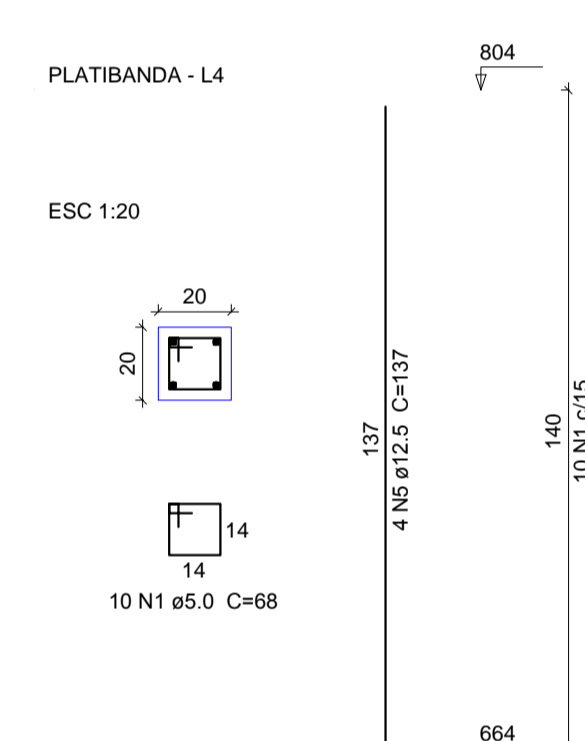
P22=P23=P24=P30=P31=P32



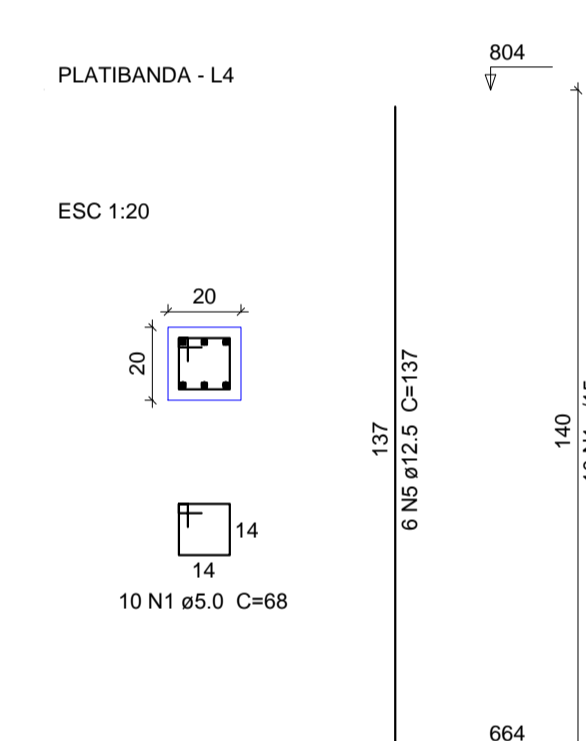
P71=P72=P73=P78=P80=P81=P82=P83=P84=P85P75=P77
=P86=P89=P90=P91=P92=P93=P94=P97=P98
=P100=P101=P102=P103=P104=P105



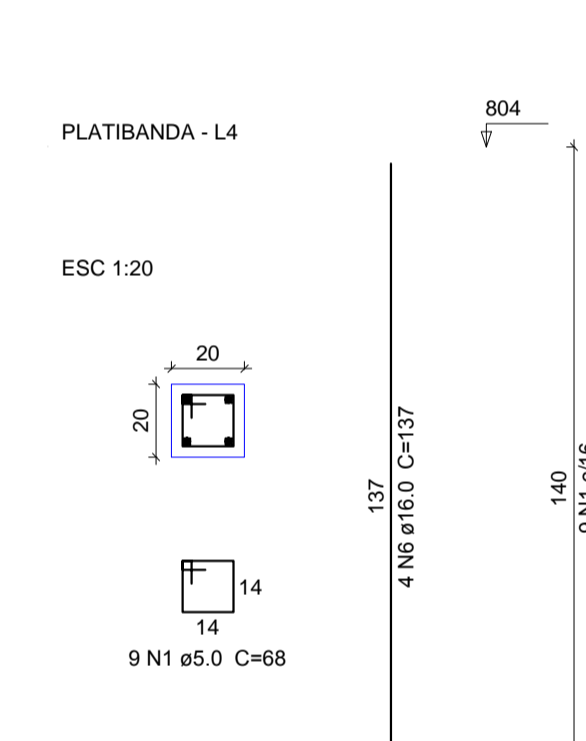
P79



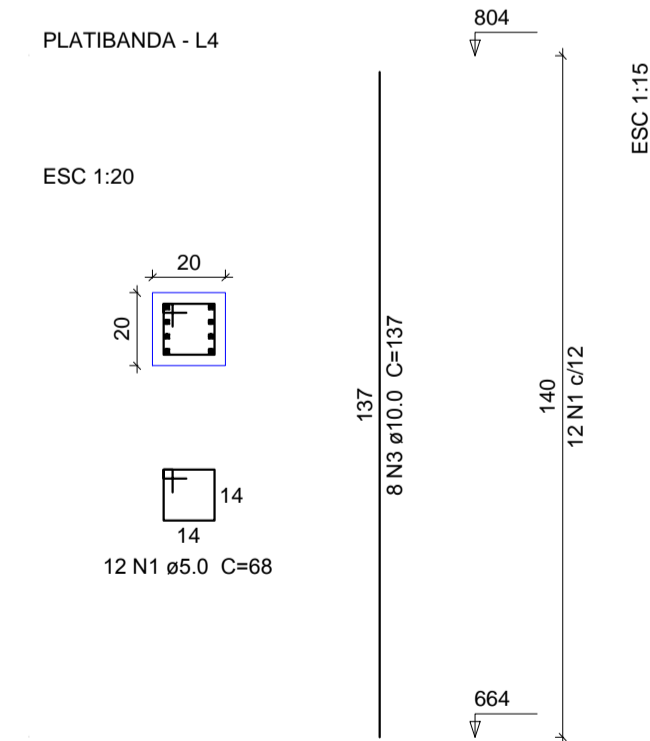
P87



P96



P99



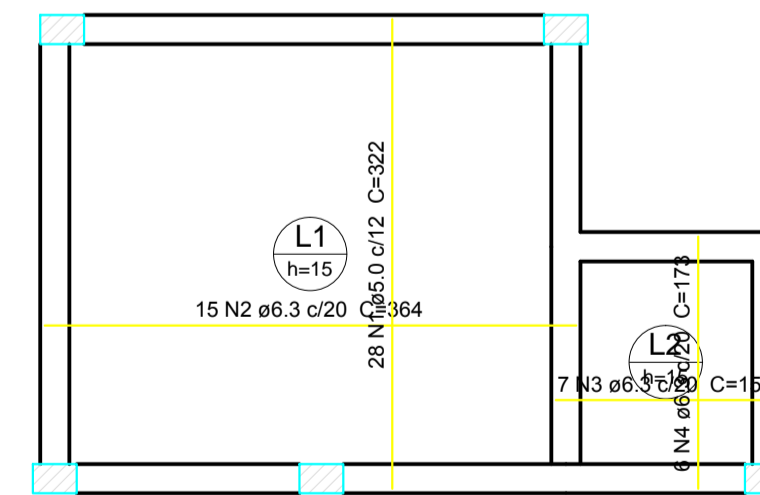
Relação do aço

AÇO	N	DIAM (mm)	QUANT (Barras)	UNIT (cm)	C.TOTAL (cm)
CA60	1	5.0	377	68	25636
	2	5.0	72	88	6336
CA50	3	10.0	126	137	17262
	4	10.0	24	173	4152
	5	12.5	10	137	1370
	6	16.0	4	137	548

Resumo do aço

AÇO	DIAM (mm)	C.TOTAL (m)	PESO + 10 % (kg)
CA50	10.0	214.2	145.2
	12.5	13.7	14.5
	16.0	5.5	9.5
CA60	5.0	319.8	54.2
PESO TOTAL (kg)			
CA50		169.3	
CA60		54.2	

Volume de concreto (C-30) = 2.3 m³
Área de forma = 44.24 m²



Relação do aço

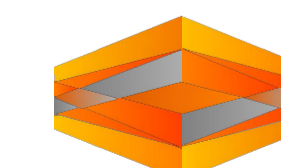
AÇO	N	DIAM (mm)	QUANT (Barras)	UNIT (cm)	C.TOTAL (cm)
CA60	1	5.0	28	322	9016
CA50	2	6.3	15	364	5460
	3	6.3	7	152	1064
	4	6.3	6	173	1038

Resumo do aço

AÇO	DIAM (mm)	C.TOTAL (m)	PESO + 10 % (kg)
CA50	6.3	75.7	20.4
CA60	5.0	90.2	15.3
PESO TOTAL (kg)			
CA50		20.4	
CA60		15.3	

Volume de concreto (C-30) = 1.67 m³
Área de forma = 11.14 m²

Armação positiva das lajes do pavimento PLATIBANDA
escala 1:50



BERARDI ENGENHARIA & CONSTRUÇÕES LTDA.

Rua Capito Euterio, 610, Sala 406, Edifício Centro Executivo, Passo Fundo/RS 99010-060
berardiengenharia@gmail.com (54) 3313 9870 - (54) 9994 0937
CNPJ: 13.425.382/0001-47

RESPONSÁVEL TÉCNICO: CONTRATANTE:

Jean Berardi Manica Prefeitura Municipal de Jóiá
Engº Civil CREA-RS 133.545-D Cnpj. 89.650.121/0001-92

BERARDI
ENGENHARIA
& CONSTRUÇÃO

PROJETO ESTRUTURAL

CONTEUDO DA PRANCHA:
FERRAGEM PILARES DE SUSTENTAÇÃO PLATIBANDA E VIGA 16

ENDEREÇO DA OBRA: PRANCHA:
Rua Dr. Edmar Kruehl - Nº 188 - Centro - Jóiá/RS

PROJETISTA: ESCALA: DATA: ÁREA DO PROJETO:
Jean Berardi 1/50 Agosto de 2017 1.139,11 m²

E-23