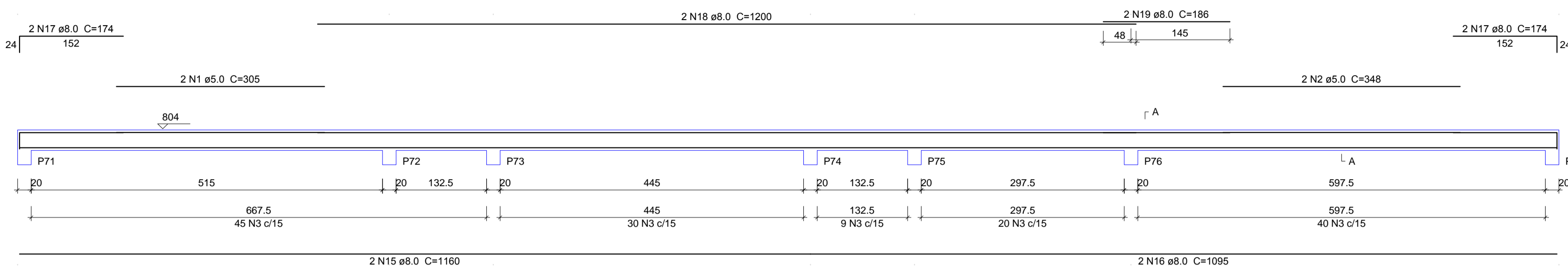
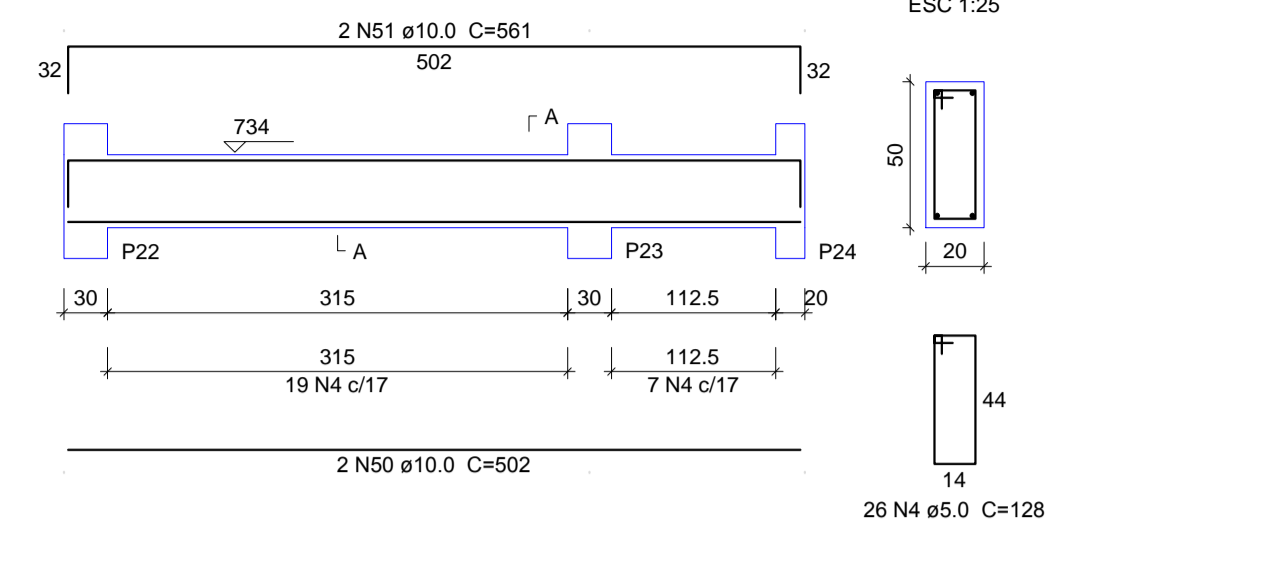


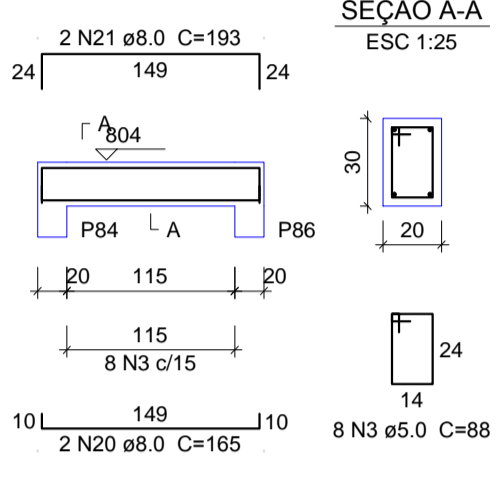
V1
ESC 1:50



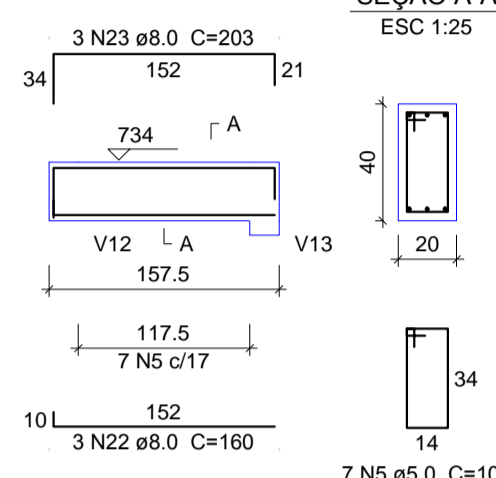
V2
ESC 1:50



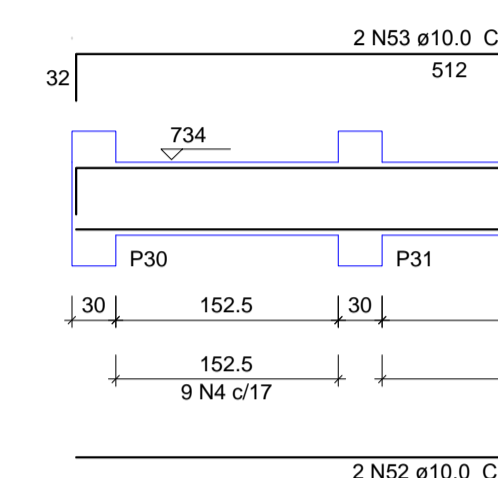
V3
ESC 1:50



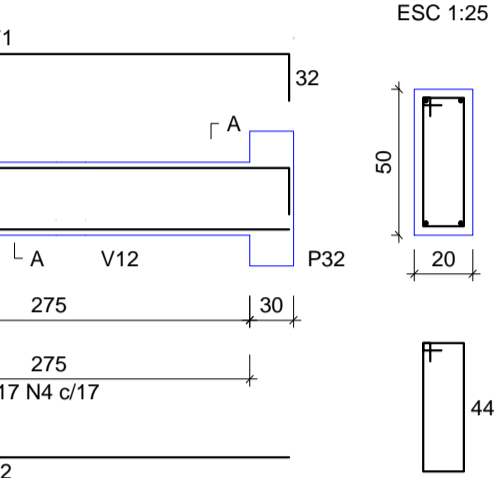
V4
ESC 1:50



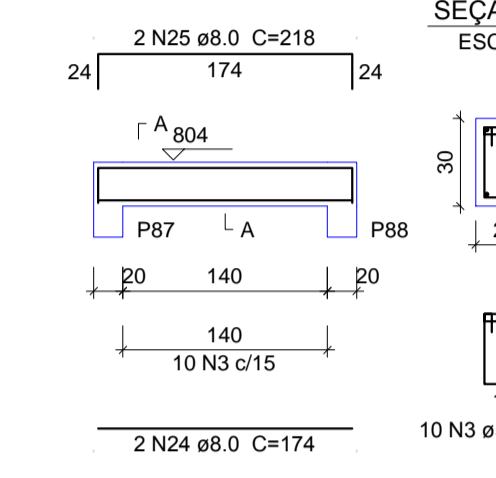
V5
ESC 1:50



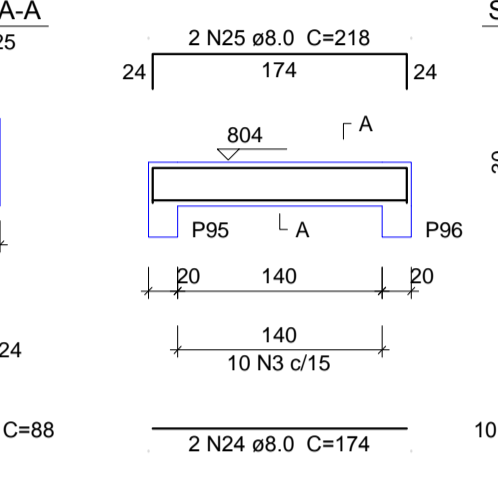
V6
ESC 1:50



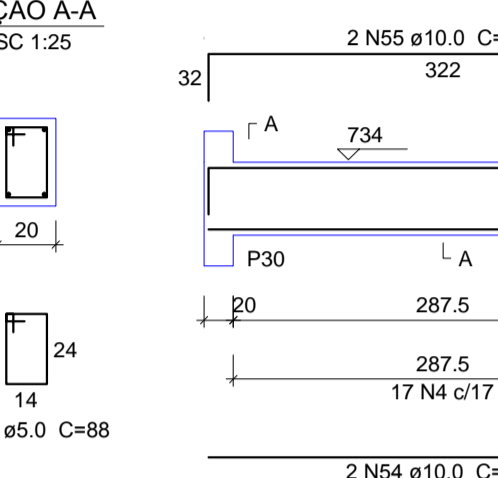
V7
ESC 1:50



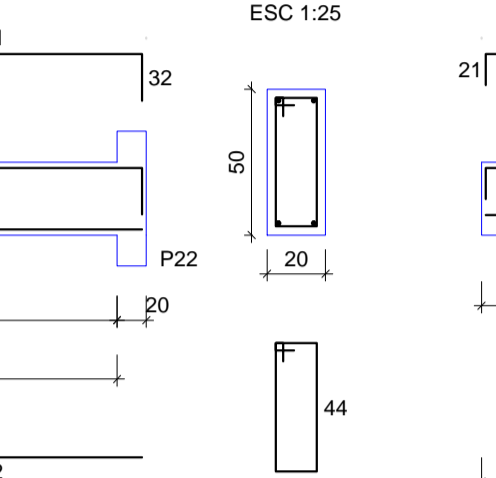
V10
ESC 1:50



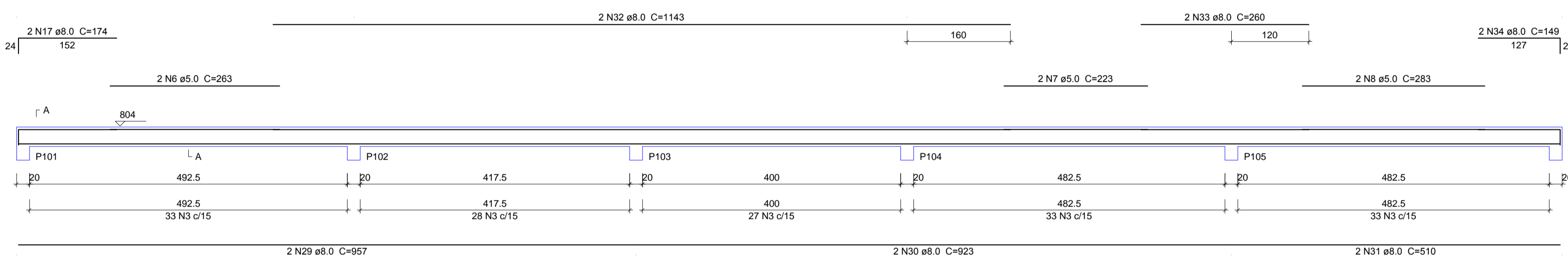
V11
ESC 1:50



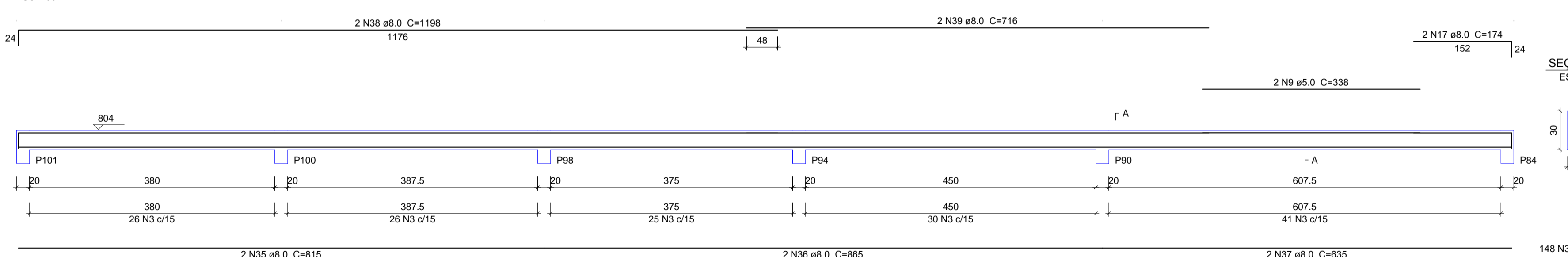
V12
ESC 1:50



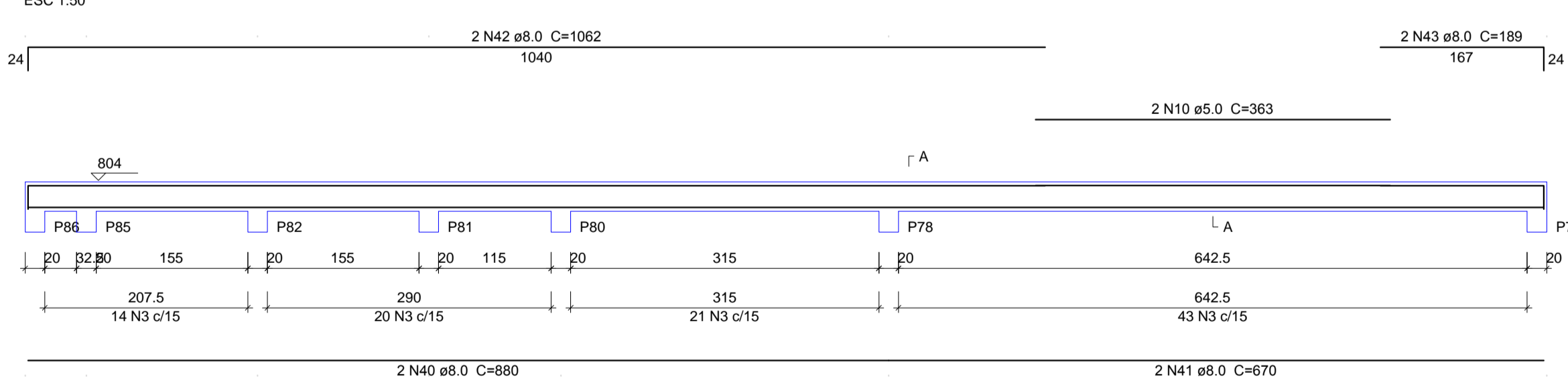
V8
ESC 1:50



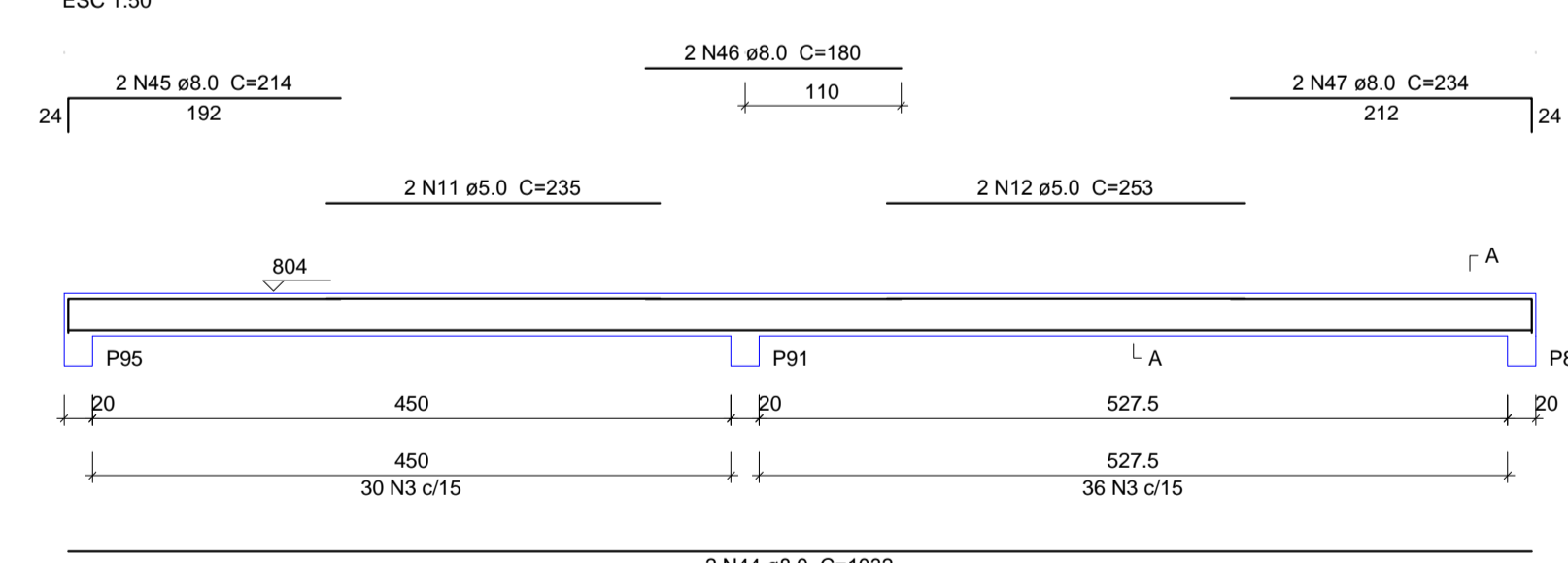
V9
ESC 1:50



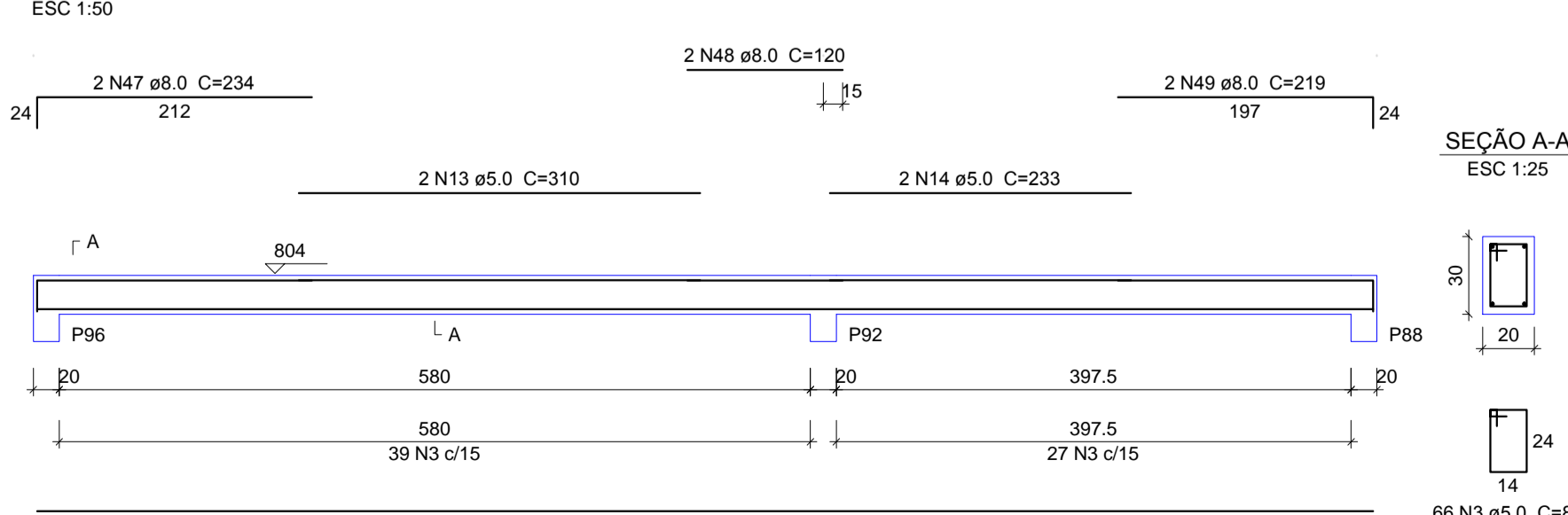
V11
ESC 1:50



V14
ESC 1:50



V15
ESC 1:50



Relação do aço

AÇO	N	DIAM (mm)	QUANT (Barras)	UNIT (cm)	C.TOTAL (cm)
CA60	1	5.0	2	305	610
	2	5.0	2	348	696
	3	5.0	704	88	61952
	4	5.0	86	128	11008
	5	5.0	24	108	2592
	6	5.0	2	263	526
	7	5.0	2	223	446
	8	5.0	2	283	566
	9	5.0	2	338	676
	10	5.0	2	363	726
	11	5.0	2	235	470
	12	5.0	2	253	506
	13	5.0	2	310	620
	14	5.0	2	233	466
	15	8.0	2	1160	2320
	16	8.0	2	1095	2190
	17	8.0	8	174	1392
	18	8.0	2	1200	2400
	19	8.0	2	186	372
	20	8.0	2	165	330
	21	8.0	2	160	320
	22	8.0	3	160	480
	23	8.0	3	203	609
	24	8.0	4	174	696
	25	8.0	4	218	872
	26	8.0	1	93	186
	27	8.0	2	322	644
	28	8.0	3	360	1080
	29	8.0	2	957	1914
	30	8.0	2	923	1846
	31	8.0	2	510	1020
	32	8.0	2	1143	2286
	33	8.0	2	260	520
	34	8.0	2	149	298
	35	8.0	2	815	1630
	36	8.0	2	865	1730
	37	8.0	2	635	1270
	38	8.0	2	1198	2396
	39	8.0	2	716	1432
	40	8.0	2	880	1760
	41	8.0	2	670	1340
	42	8.0	2	1062	2124
	43	8.0	2	189	378
	44	8.0	4	1032	4128
	45	8.0	2	214	428
	46	8.0	2	180	360
	47	8.0	4	234	936
	48	8.0	2	120	240
	49	8.0	2	219	438
	50	10.0	2	502	1004
	51	10.0	2	561	1122
	52	10.0	2	512	1024
	53	10.0	2	571	1142
	54	10.0	2	322	644
	55	10.0	2	381	762
	56	10.0	2	327	654
	57	10.0	2	386	772

Resumo do aço

AÇO	DIAM (mm)	C.TOTAL (m)	PESO + 10% (kg)
CA50	8.0	424.4	184.2
	10.0	71.3	48.3
CA60	5.0	818.6	138.8
PESO TOTAL (kg)			
CA50		232.5	
CA60		138.8	

Volume de concreto (C-30) = 8.74 m³
Área de forma = 114.03 m²



BERARDI ENGENHARIA & CONSTRUÇÕES LTDA.
Rua Capitão Eteuterio, 810, Sala 406, Edifício Centro Executivo, Passo Fundo/RS 99010-060
berardiengenharia@gmail.com (54) 33313 9870 - (54) 9994 0937
CNPJ: 13.425.382/0001-47

RESPONSÁVEL TÉCNICO: **Jean Berardi Manica** Engº Civil CREA-RS 133.545-D
CONTRATANTE: Prefeitura Municipal de Jóia Cnpj: 89.850.121/0001-92

PROJETO: **PROJETO ESTRUTURAL**
FERRAGEM VIGAS PLATIBANDA

CONTEUDO DA PRANCHA: **FERRAGEM VIGAS PLATIBANDA**

ENDEREÇO DA OBRA: Rua Dr. Edmar Kruehl - Nº 188 - Centro - Jóia/RS
PROJETISTA: Jean Berardi ESCALA: 1/50 DATA: Agosto de 2017 ÁREA DO PROJETO: 1.138,11 m²

E-22

DIREITOS AUTORAIS RESERVADOS CONFORME ARTIGO 184 DO CÓDIGO PENAL LEI 9610 DE 19/02/1998 E RESOLUÇÃO CONFEA 205/71