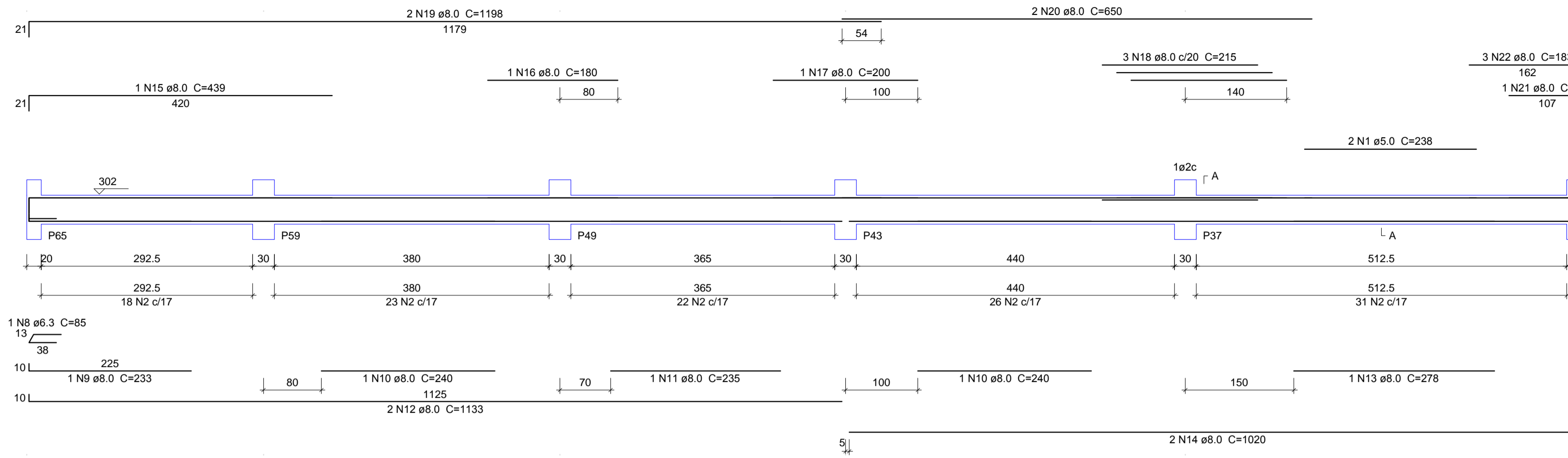
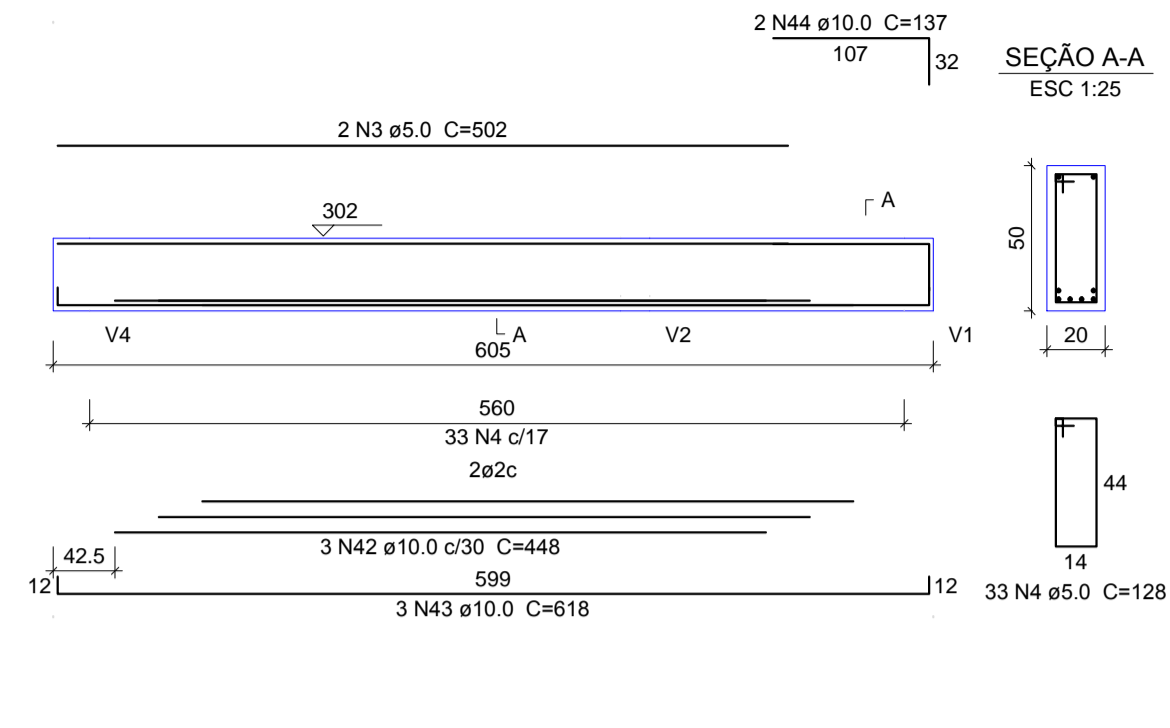


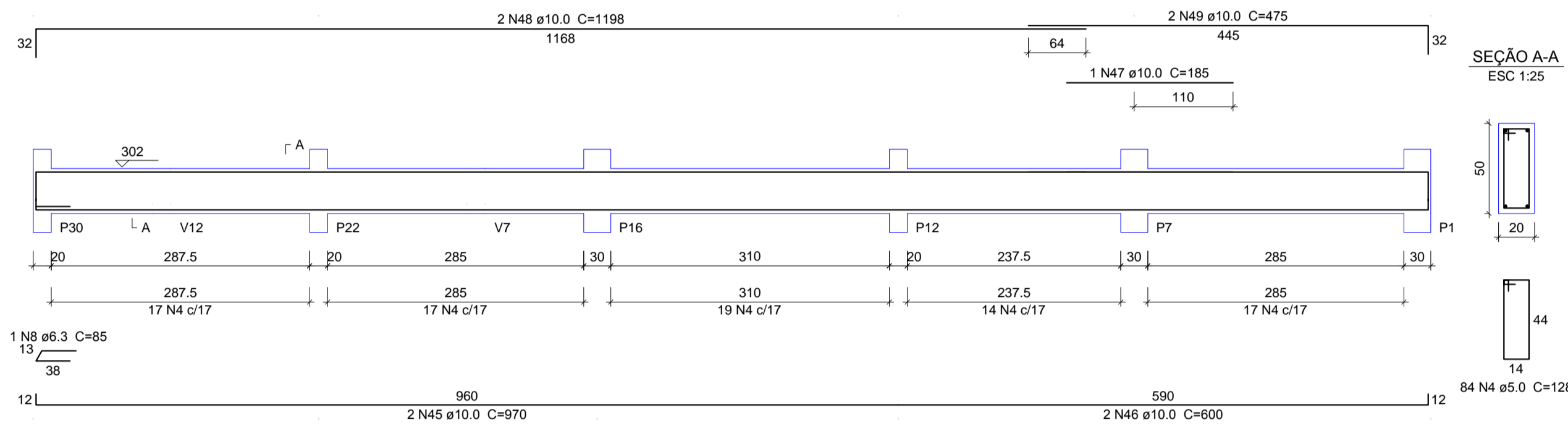
V25
ESC 1:50



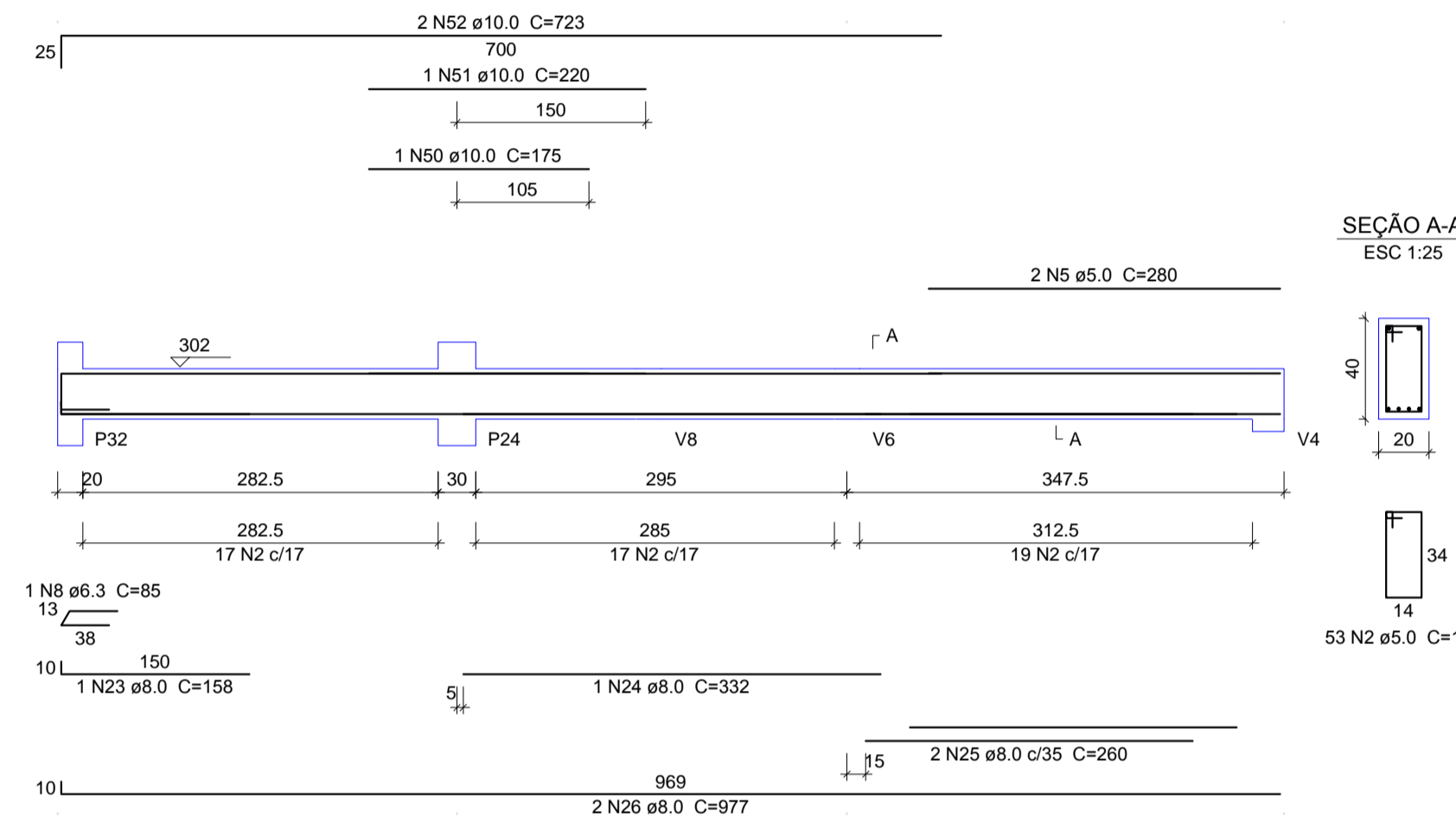
V32
ESC 1:50



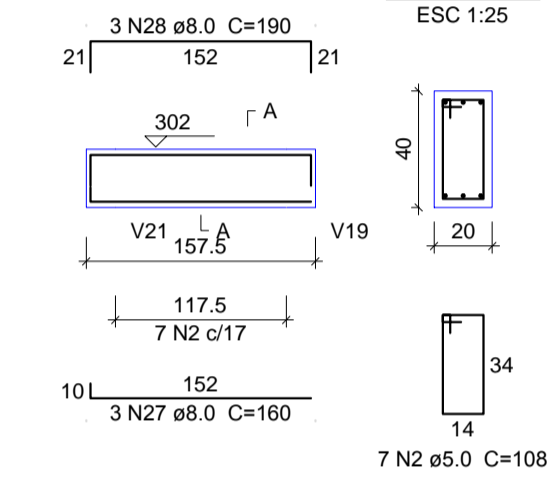
V26
ESC 1:50



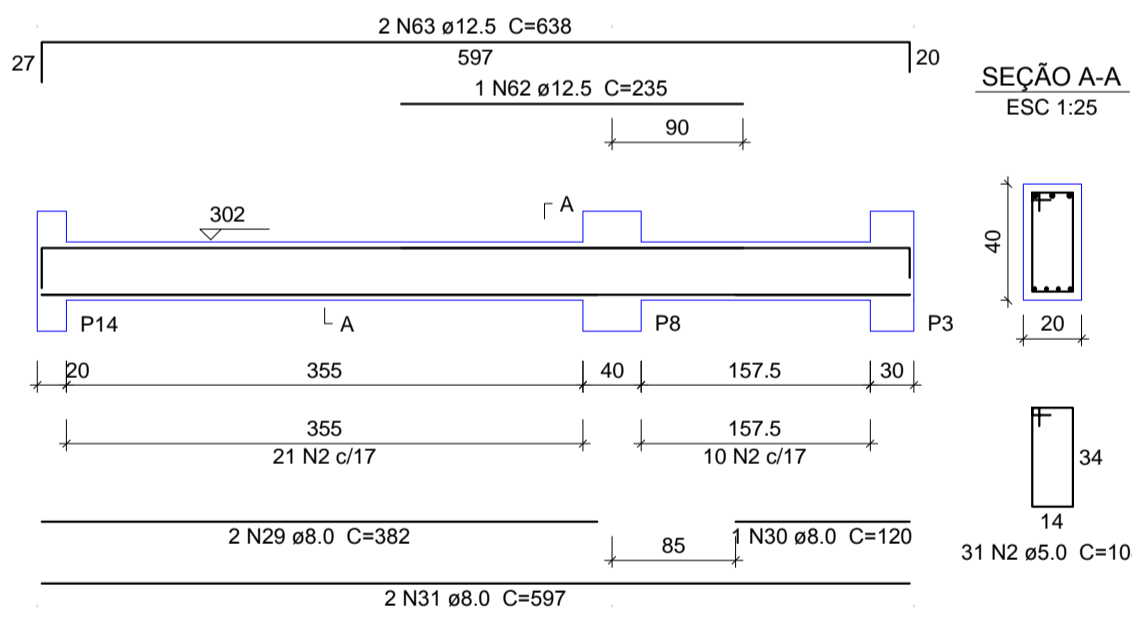
V31
ESC 1:50



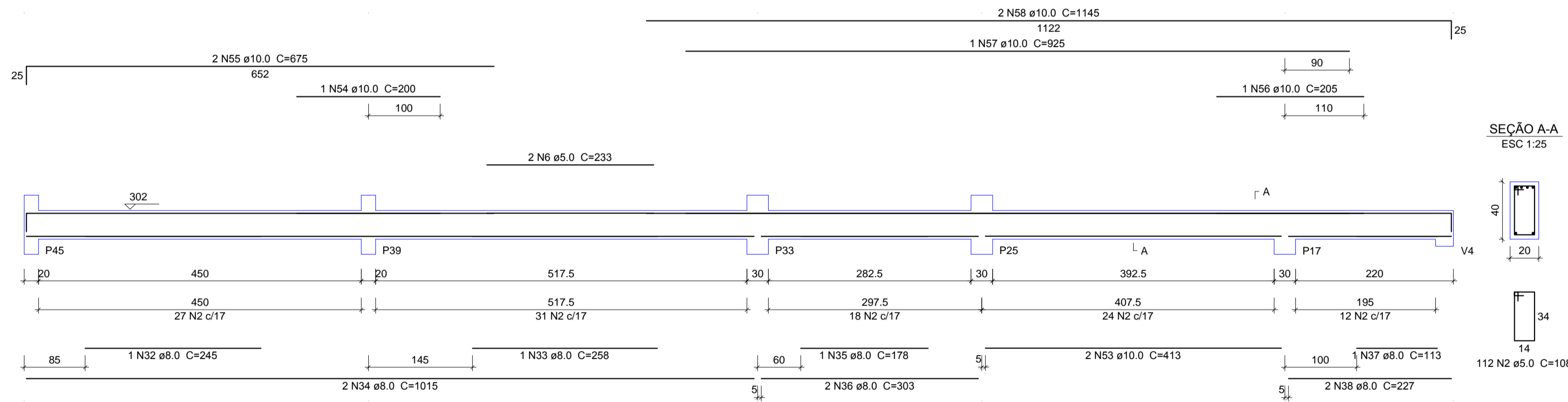
V48
ESC 1:50



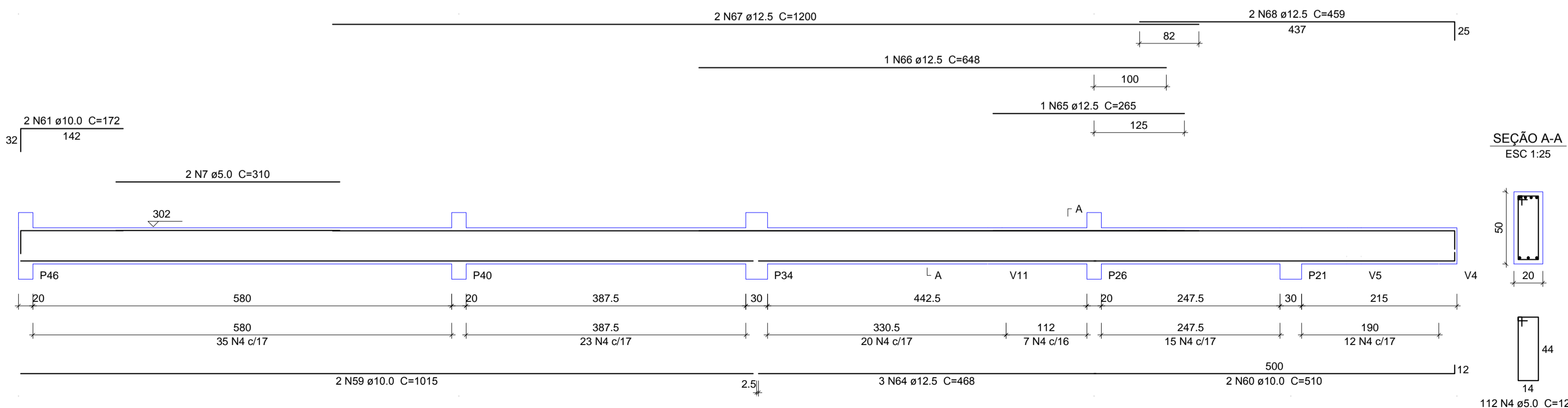
V33
ESC 1:50



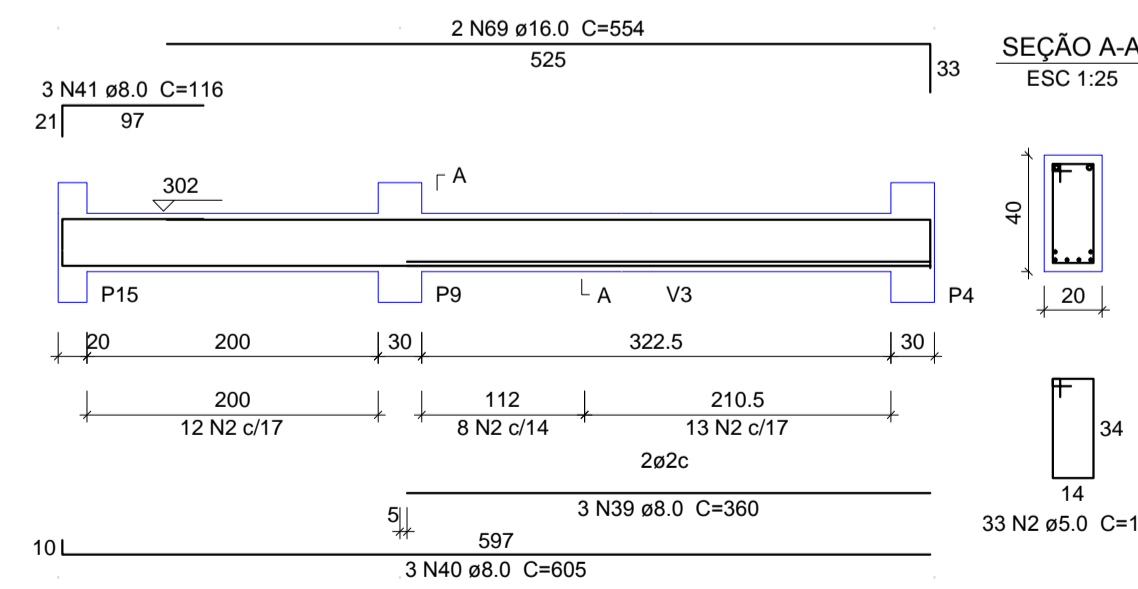
V36
ESC 1:50



V38
ESC 1:50



V39
ESC 1:50



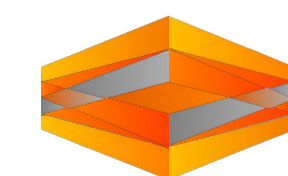
Relação do aço

AÇO	N	DIAM (mm)	QUANT (Barras)	UNIT (cm)	C.TOTAL (cm)
CA60	1	5.0	2	238	476
	2	5.0	356	108	38448
	3	5.0	2	502	1004
	4	5.0	229	128	29312
	5	5.0	2	280	560
	6	5.0	2	233	466
	7	5.0	2	310	620
CA50	8	6.3	3	85	255
	9	8.0	1	233	233
	10	8.0	2	240	480
	11	8.0	1	235	235
	12	8.0	2	1133	2266
	13	8.0	1	278	278
	14	8.0	2	1020	2040
	15	8.0	1	439	439
	16	8.0	1	180	180
	17	8.0	1	200	200
	18	8.0	3	215	645
	19	8.0	2	1198	2396
	20	8.0	2	650	1300
	21	8.0	1	128	128
	22	8.0	3	183	549
	23	8.0	1	158	158
	24	8.0	1	332	332
	25	8.0	2	260	520
	26	8.0	2	977	1954
	27	8.0	3	160	480
	28	8.0	3	190	570
	29	8.0	2	382	764
	30	8.0	1	120	120
	31	8.0	2	597	1194
	32	8.0	1	245	245
	33	8.0	1	258	258
	34	8.0	2	1015	2030
	35	8.0	1	178	178
	36	8.0	2	303	606
	37	8.0	1	113	113
	38	8.0	2	227	454
	39	8.0	3	360	1080
	40	8.0	3	605	1815
	41	8.0	3	116	348
	42	10.0	3	448	1344
	43	10.0	3	618	1854
	44	10.0	2	137	274
	45	10.0	2	970	1940
	46	10.0	2	600	1200
	47	10.0	1	185	185
	48	10.0	2	1198	2396
	49	10.0	2	475	950
	50	10.0	1	175	175
	51	10.0	1	220	220
	52	10.0	2	723	1446
	53	10.0	2	413	826
	54	10.0	1	200	200
	55	10.0	2	675	1350
	56	10.0	1	205	205
	57	10.0	1	925	925
	58	10.0	2	1145	2290
	59	10.0	2	1015	2030
	60	10.0	2	510	1020
	61	10.0	2	172	344
	62	12.5	1	235	235
	63	12.5	2	638	1276
	64	12.5	3	468	1404
	65	12.5	1	265	265
	66	12.5	1	648	648
	67	12.5	2	1200	2400
	68	12.5	2	459	918
	69	16.0	2	554	1108

Resumo do aço

AÇO	DIAM (mm)	C.TOTAL (m)	PESO + 10% (kg)
CA50	6.3	2.6	0.7
	8.0	245.9	106.7
	10.0	211.8	143.6
	12.5	71.5	75.7
	16.0	11.1	19.2
CA60	5.0	708.9	120.2
PESO TOTAL (kg)			
CA50	346		
CA60	120.2		

Volume de concreto (C-30) = 9.34 m³
Área de forma = 114.73 m²



BERARDI ENGENHARIA & CONSTRUÇÕES LTDA.

Rua Capitão Etelvino, 610, Sala 406, Edifício Centro Executivo, Passo Fundo/RS 99010-060
berardiengenharia@gmail.com (54) 33313 9870 - (54) 9994 0937
CNPJ: 13.425.382/0001-47

RESPONSÁVEL TÉCNICO: CONTRATANTE:

Jean Berardi Manica Prefeitura Municipal de Jóia
Engº Civil CREA-RS 133.545-D Cnpj: 89.650.121/0001-92

PROJETO:

PROJETO ESTRUTURAL

CONTEUDO DA PRANCHA: FERRAGEM VIGAS BALDRAME PAVIMENTO TÉRREO 03

ENDEREÇO DA OBRA: PRANCHA:

Rua Dr. Edmar Krueel - Nº 188 - Centro - Jóia/RS

PROJETISTA: ESCALA: DATA: ÁREA DO PROJETO:

Jean Berardi 1/50 Agosto de 2017 1.139,11 m²

E-10